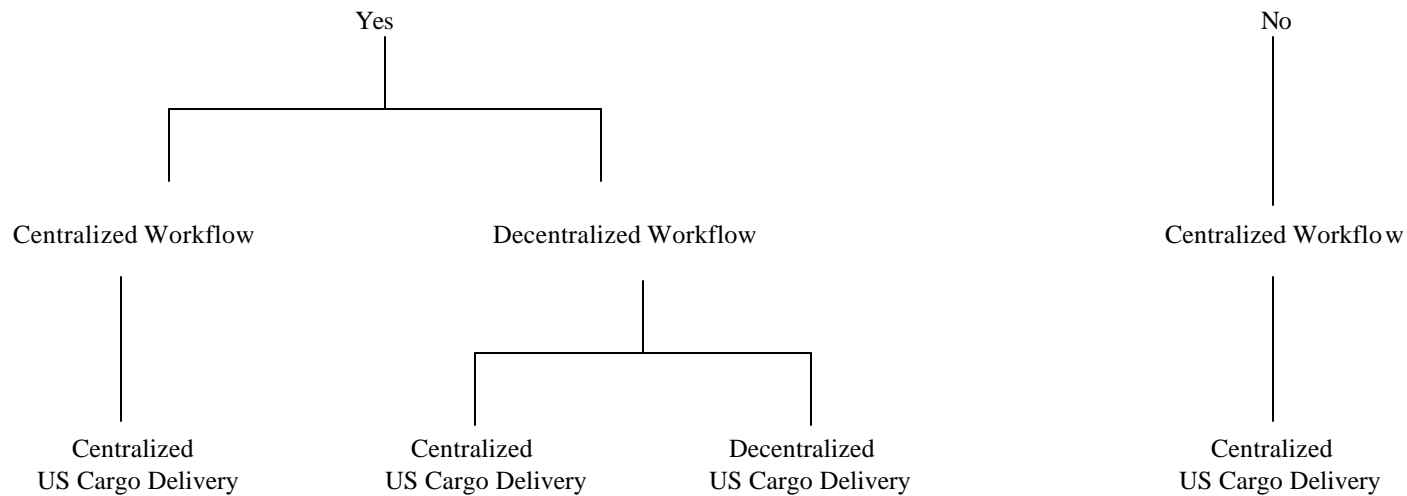


MORE Decision Tree

Use this decision tree to determine what workflow and delivery options are possible given your answer to the question below. Refer to the two documents that compare centralized and decentralized workflow entitled *Your Library as a MORE Requester* and *Your Library as a MORE Responder*.

Will all automated buildings in the district participate in MORE (lend and request items)?



Quick Definitions:

Centralized Workflow	Only staff at one location log into and manage the MORE requesting system for all participating locations.
Decentralized Workflow	The staff at each branch (building) log into and manage the MORE requesting system for their particular location.
Centralized US Cargo Delivery	US Cargo makes only one stop at your district no matter how many buildings are participating (internal delivery mechanism routes materials from central US Cargo stop to participating branches).
Decentralized US Cargo Delivery	US Cargo makes stops at more than one building in your district. You can only have decentralized delivery if ALL automated buildings in your district are MORE participants. This option requires that you follow a decentralized workflow.