

Student Alt-ID Barcodes

Purpose:

Create barcodes for students using Alt-ID (District's Student ID number)
When students use ID cards for security or lunchroom purposes – only need ONE










Location:

INFOhio tab > LBL: User Labels

Setup options:

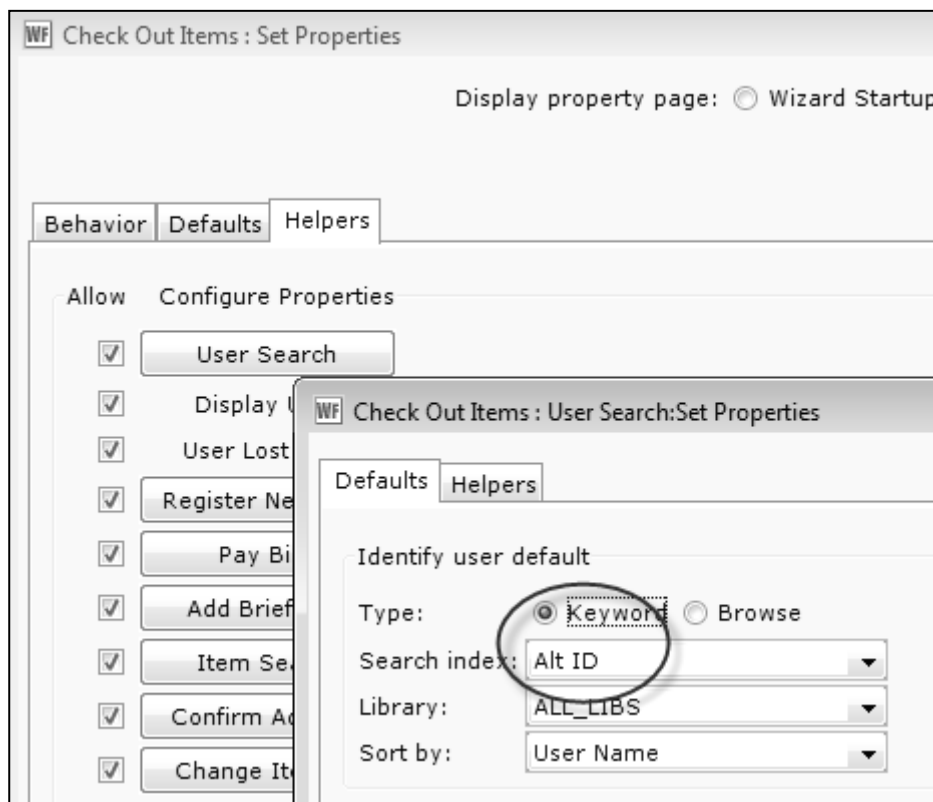
- a. Basic tab – rename report
- b. User Selection tab
 - Library
 - Grade(s) or student user profile for your building
- c. Sorting tab
 - As desired
- d. Label Options
 - Verify Patron Barcode Labels is selected
 - Uncheck "Show User ID barcode" and "... Value".
 - Check "Show User Alt-ID barcode" and "... Value".
 - Other options as desired

Result:

TEST DL City School District TEST DL Elementary School Ashbaugh, ETHAN  200218	TEST DL City School District TEST DL Elementary School Bard, TAYLOR  160945	TEST DL City School District TEST DL Elementary School Bishop, ANASTASIA  160930
TEST DL City School District TEST DL Elementary School Boyer, ELIJAH (JACOB)  160900	TEST DL City School District TEST DL Elementary School Busk, MICHAEL  160120	TEST DL City School District TEST DL Elementary School Buzzard, JOSEPH  160960
TEST DL City School District TEST DL Elementary School Churchill, CHRISTOPHER  122395	TEST DL City School District TEST DL Elementary School Cowart, JARED  160015	TEST DL City School District TEST DL Elementary School Field, SAMANTHA  160615

Tip:

To use these barcodes in Checkout wizard, be sure to set the properties for USER SEARCH helper to "Keyword/ALT-ID" default. (Save when prompted to save property to your PC).



Checkout screen appears – scan Alt-ID barcode:

